

COMPOSITZ INSULATOR

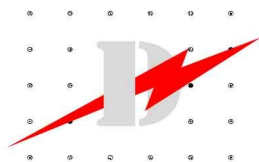
INDEX

DULHUNTY POWER

COMPOSITZ INSULATOR

SECTION J

Distribution DS –M Series 15kV – 46kV.....	Page J-2
Distribution DS –Fibrelink 15kV – 33kV.....	Page J-3
Long Rod Suspension / Tension: 1.....	Page J-4
Long Rod Suspension / Tension: 2.....	Page J-5
Line Post Insulator.....	Page J-6
Line Post Base Insulators.....	Page J-7
Line Post End Fittings : 1.....	Page J-8
Line Post End Fittings : 2.....	Page J-9



COMPOSITZ INSULATOR

RELIABLE COMPOSITZ INSULATORS DISTRIBUTION DS – M

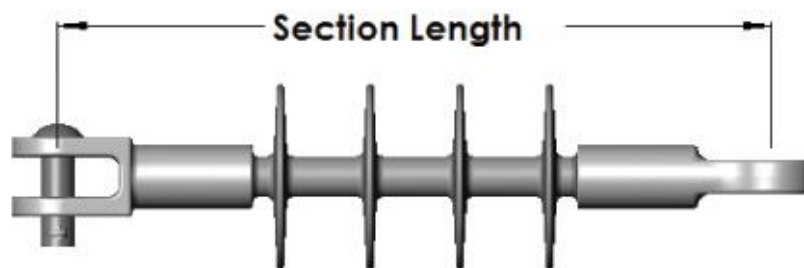
SECTION J



DULHUNTY POWER

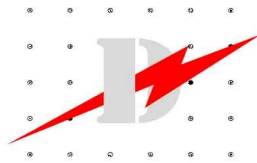
DS-M Series

15kV – 46kV



Typical Line Voltage	Catalogue No.	Section Length	Dry Arc	Leakage	Electrical Flashover (kV)				Weight
					60 Hz		CIFO		
kV		mm	mm	mm	Dry	Wet	Pos	Neg	Kg.
15	DS-15M	330	192	401	90	65	140	145	1.18
28	DS-28M	432	294	628	130	100	190	220	1.32
35	DS-35M	559	426	954	170	155	280	290	1.4
46	DS-46M	680	510	1170	205	184	357	385	3.0

Also available as Ball & Socket, Eye-Eye, Tongue – Tongue.
Available only in Australia, New Zealand and the South Pacific



COMPOSITZ INSULATOR

RELIABLE COMPOSITZ INSULATORS
DISTRIBUTION DS-S FIBRELINK

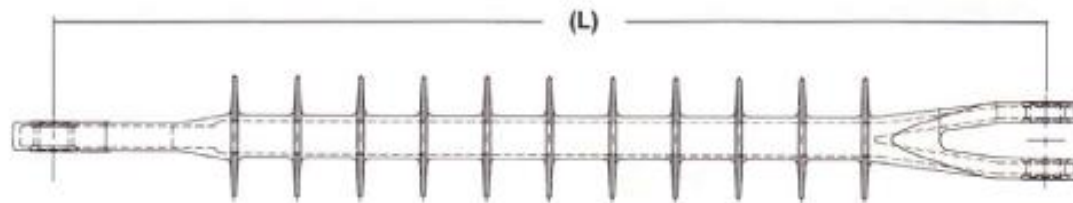
SECTION J



DULHUNTY POWER

FIBRELINK

15kV – 33kV

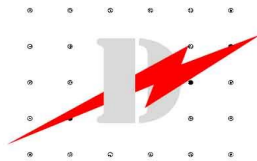


Metal Eyelets

G – Galvanized
S – Stainless Steel (300 Series)

Typical Line Voltage kV	Catalogue No.	Section L mm	Leakage mm	Electrical Flashover (kV)				Weight Kg	Quantity	
				60 Hz		CIFO			CTN	Pallet
				Dry	Wet	Pos	Neg			
11	DS-15S	318	381	113	112	202	225	1.2	18	540
22	DS-28S	451	660	177	157	286	357	1.6	18	486
33	DS-35S	572	884	222	199	370	401	2	18	342

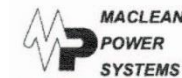
Available only in Australia, New Zealand and the South Pacific



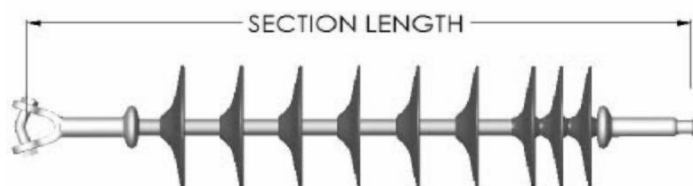
COMPOSITZ INSULATOR

RELIABLE COMPOSITZ INSULATORS
LONG ROD SUSPENSION / TENSION

SECTION J



DULHUNTY POWER

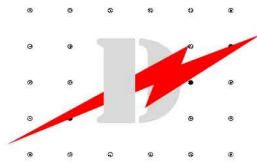


S	2	9	8	0	6	8	B	X	0																						
INSULATOR TYPE (SPECIFIED MECHANICAL LOAD)		TOWER LINE END FITTING TYPE		SECTION LENGTH (INCHES)			LEAKAGE LEVEL	CORONA RINGS	RPP INTERNAL USE																						
Type	Size mm	SML kN	RTL kN	4 -Y Clevis 5 -Tongue 6 -Clevis 7 -Socket 8 -Ball 9 -Eye			Light Contamination - A Heavy Contamination - B Variable Leakage - V		<table border="1"> <tr> <th colspan="2">Tower Line</th> </tr> <tr> <td>A - none</td> <td>8"</td> </tr> <tr> <td>B- none</td> <td>12"</td> </tr> <tr> <td>C- none</td> <td>17"</td> </tr> <tr> <td>D -8"</td> <td>8"</td> </tr> <tr> <td>E- 12"</td> <td>12"</td> </tr> <tr> <td>F- 17"</td> <td>17"</td> </tr> <tr> <td>G -8"</td> <td>12"</td> </tr> <tr> <td>H -12"</td> <td>17"</td> </tr> <tr> <td>V- 12"</td> <td>17"</td> </tr> <tr> <td>X- none</td> <td>none</td> </tr> </table>	Tower Line		A - none	8"	B- none	12"	C- none	17"	D -8"	8"	E- 12"	12"	F- 17"	17"	G -8"	12"	H -12"	17"	V- 12"	17"	X- none	none
Tower Line																															
A - none	8"																														
B- none	12"																														
C- none	17"																														
D -8"	8"																														
E- 12"	12"																														
F- 17"	17"																														
G -8"	12"																														
H -12"	17"																														
V- 12"	17"																														
X- none	none																														

ELECTRICAL AND DIMENSIONAL ORDERING EXAMPLE

To order a 68" insulator with eye/ball end fittings, heavy contamination leakage, 50,000 SML rating the Catalogue Number would be S298068BX00

Available only in Australia, New Zealand and the South Pacific



COMPOSITZ INSULATOR

RELIABLE COMPOSITZ INSULATORS LONG ROD SUSPENSION / TENSION

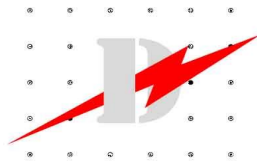
SECTION J



DULHUNTY POWER

SUSPENSION INSULATORS													
STRENGTH AND CLASSIFICATION OF AVAILABLE END FITTINGS BY ROD SIZE													
END FITTING TYPE													
		Y-clevis		Tongue		Clevis		Socket		Ball		Eye	
INSULATOR		ANSI	IEC	ANSI	IEC	ANSI	IEC	ANSI	IEC	ANSI	IEC	ANSI	IEC
S1	25klb	*Yes		52-6		52-6		52-6		52-6		*Yes	
	120kN	*Yes					16-C		16		16		
S5	30klb	*Yes		52-6		52-6		52-5		52-5		*Yes	
S6+	36 klb								24		24		
	160kN								20		20	*Yes	
S2	50 lkb	*Yes		52-10(1)		52-10		52-11		52-11		*Yes	
	210 kN						19-C		20		20		
	30 klb							52-5		52-5			
S4	80 klb				*Yes (1)							*Yes	

Available only in Australia, New Zealand and the South Pacific



COMPOSITZ INSULATOR

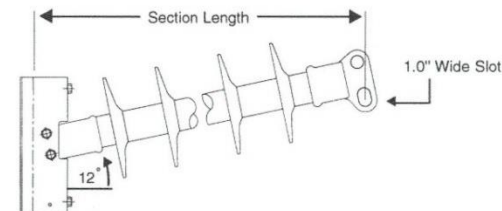
RELIABLE COMPOSITZ INSULATORS LINE POST INSULATORS

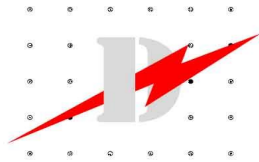
SECTION J



DULHUNTY POWER

H	2	9	1	0	4	0	B	X	0	
INSULATOR TYPE	END FITTING TYPE			NOMINAL SECTION LENGTH (INCHES)			LEAKAGE LEVEL	CORONA RINGS	RPP INTERNAL USE	
<u>Orientation</u> H – Horizontal Post V- Vertical Post <u>Rod Diameter</u> 1-2.0" 2-2.5" 3-3.0"	<u>Base Type</u> 1-2 Piece Flat SF-01 C-2 Piece Gain SG-01 3-3" Bolt Circle 4-3" Stud Base 5-5" Bolt Circle 6-Swivel Base 8-No Base (anchor only) 9-2 Piece Gain X- none			<u>Line End Fitting</u> 0-2 Hole Tongue 1-2 Hole Drop Tongue 2- Single Trunnion 3-3" Bolt Circle 4-3" Bolt Circle w/ Trunnion 5-5" Bolt Circle 6-5" Bolt Circle w/ Trunnion 7- F-Neck 9-3" Bolt Circle Short w/ Trunnion A-3" Bolt Circle (short) C- Extended Drop Tongue D- Double Trunnion X- None			Light Contamination – A Heavy Contamination – B Variable Leakage - V	<u>Lower Line</u> A - none 6" B - none 11" X - none none		
ELECTRICAL AND DIMENSIONAL ORDERING EXAMPLE To order a 40" insulator with a 2 Piece Gain steel base, 2 hole drop tongue, heavy contamination leakage, and 2.5" rod diameter, the Catalogue Number would be H291040BX00										





COMPOSITZ INSULATOR

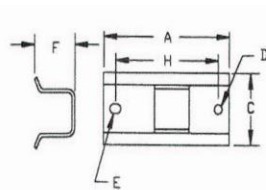
RELIABLE COMPOSITZ INSULATORS LINE POST INSULATOR BASES

SECTION J

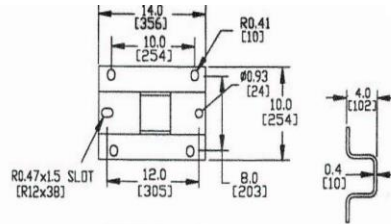


DULHUNTY POWER

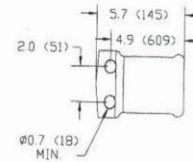
Line Post Base Dimensions



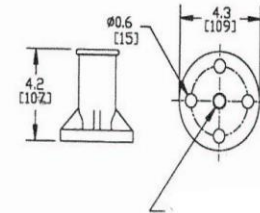
H2/H3 2 PIECE GAIN BASE



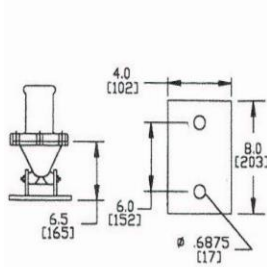
H2FLAT BASE



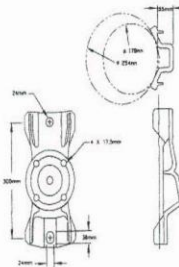
H2 ANCHOR



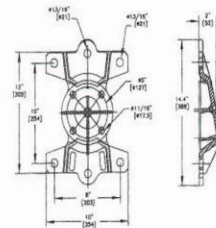
H1 3' BOLT CIRCLE AND STUD BASE



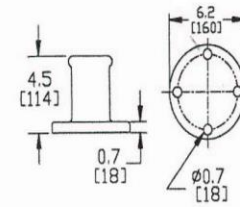
H2 SWIVEL BASE



SG-01 GAIN BASE

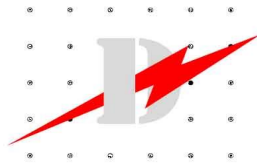


SF-01 FLAT BASE



H2 5' BOLT CIRCLE

Available only in Australia, New Zealand and the South Pacific



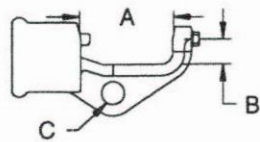
COMPOSITZ INSULATOR

RELIABLE COMPOSITZ INSULATORS LINE POST INSULATOR END FITTINGS

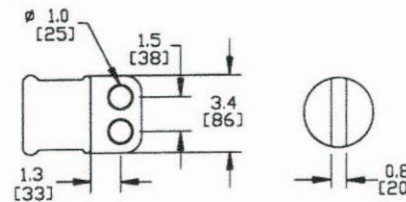
SECTION I



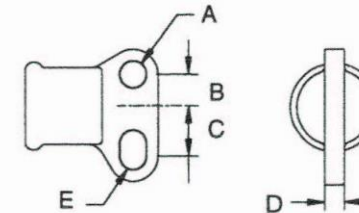
DULHUNTY POWER



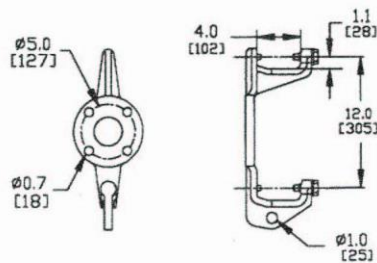
TRUNNION



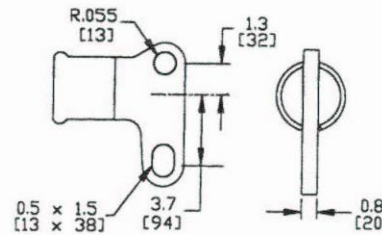
H2 2 HOLE TONGUE



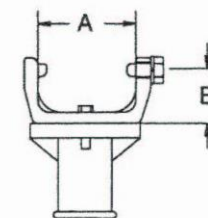
DROP TONGUE



H2 & H3 DOUBLE TRUNNION



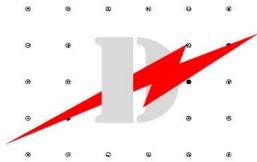
H2 EXTENDED DROP EYE



VERTICAL TRUNNION

Dimensions next page (173)

Available only in Australia, New Zealand and the South Pacific



COMPOSITZ INSULATOR

RELIABLE COMPOSITZ INSULATORS LINE POST END FITTINGS

SECTION J

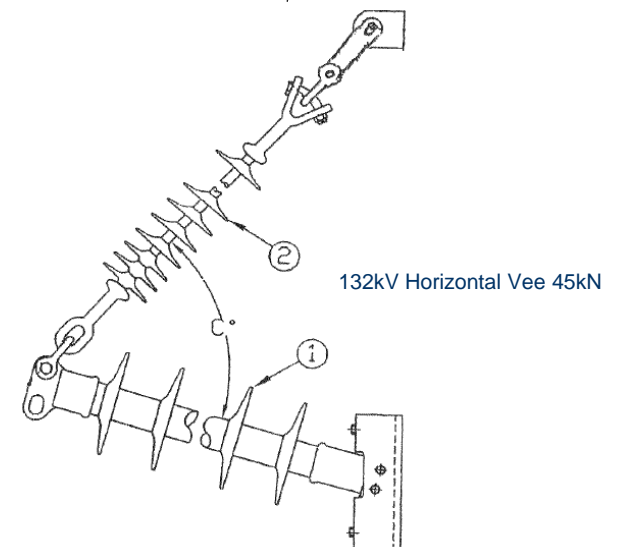
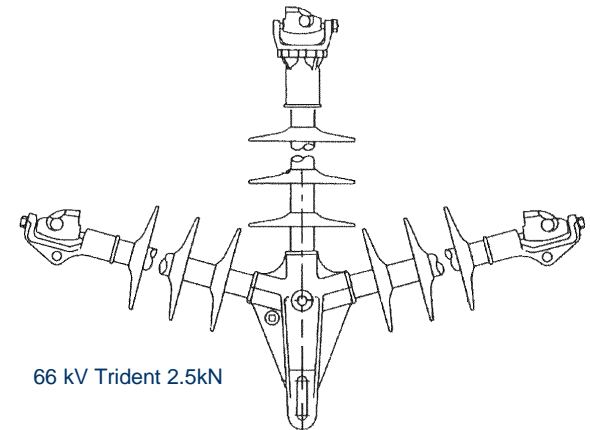


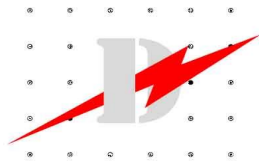
DULHUNTY POWER

Line Fitting	Ins	A	B	C	D	E	Mat.
Trunnion	H1	102	28	19	18	-	MCI
Trunnion	H2	102	28	25	15	-	MCI
Trunnion	H3	102	28	25	19	-	MCI
Vertical Trunnion	V1	102	53				MCI
Vertical Trunnion	V2	102	76				MCI
Drop Eye	H1	13	33	51	19	13 x 38	AI
Drop Eye	H2	13	33	51	19	13 x 38	MCI
Drop Eye	H3	13	38	51	19	13 x 38	MCI

Refers to previous page (J-8)

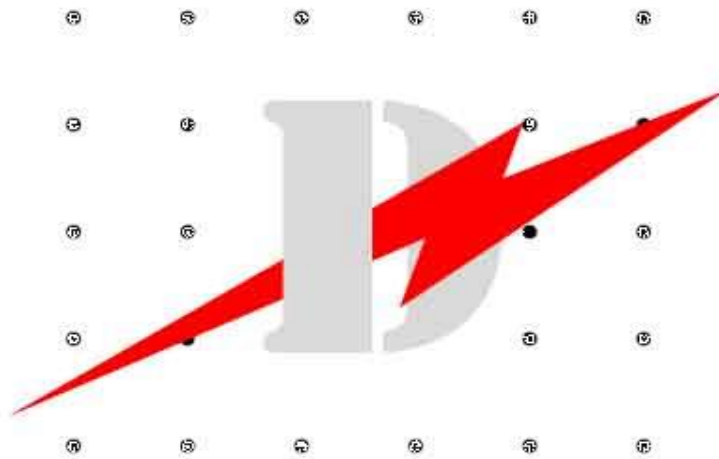
Available only in Australia, New Zealand and the South Pacific





DULHUNTY POWER

Dulhunty Power (Aust) Pty Ltd
Unit 2/35 Waterloo Road, North Ryde
Sydney NSW 2113, Australia
Telephone: + 61 2 9870 7277
Facsimile: + 61 2 9870 7299
Email: sales@dulhunty.com
Web: www.dulhuntypower.com



Dulhunty Power (China) Ltd
3303#, Zhuan Qiao, Jiangdu
Jiangsu, 225233 P.R.C.
Telephone: + 86 514 6842 462
Facsimile: + 86 514 6842 463
Email: sales@dulhuntychina.com
Web: www.dulhuntypower.com

Dulhunty Power North America
14262 Fred and Al Key Rd.
Kiln, Ms. 39556
United States of America
Telephone +1 (228) 467-8075
Email: brandi@dulhunty.com

Dulhunty Power (N.Z.) Ltd
PO Box 281
Whangaparaoa
Auckland New Zealand
Telephone + 64 9 424 7295
Facsimile: + 64 9 428 0577
Email: brian@dulhunty.com
Web: www.dulhuntypower.com

Dulhunty Power (Malaysia) Sdn. Bhd.
Lot 8040, Jalan 2/D Kg. Baru Subang
40150 Shah Alam
Selangor Darul Ehsan, Malaysia
Telephone + 603 7843 0488
Facsimile: + 603 7843 0433
Email: enquiry@dulhunty.com.my
Web: www.dulhuntypower.com

Dulhunty Power (Thailand) Ltd
3/2 Moo 7, Suwintawong Road
Klongluangphang, AmphurMuang
Chachoengsao 24000, Thailand
Telephone + 66 3884 5675
Facsimile: + 66 3884 5674
Email: pana@dulhunty.com
Web: www.dulhuntypower.com